

SLIDING DOOR ACCESSORIES



Reinforcing Kits

Adjustable and fixed strap, as well as threaded rod based sliding door reinforcing kits available to distribute weight from the top lateral through the door and reduce top lateral sag



Astragals

Astragals can be used to provide additional weather resistance against wind and snow, closing the gap between bi-parting doors



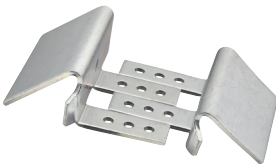
Pulls

Available in multiple size and finishes, door pulls make opening doors easier and provide a finished look



Door Guides

Single door guides, bi-passing door guides and center door guides keep doors in place when opening and closing, even in high winds



Stay Rollers

Fixed and adjustable stay rollers with Delrin® wheels to keep doors traveling smoothly



Guide Rails

Used with continuous guides, these rails ensure doors travel securely and smoothly, even in steady wind pressure



Door Bumpers

Fixed and adjustable door bumpers to ensure doors do not travel past their track



Door Stops

Jamb mount or bottom lateral stops available to keep the door within a fixed travel distance



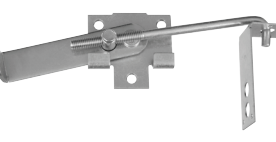
Door & Gate Latches

Multiple styles, strengths and finish options are available for door and gate latches, providing security and functionality



Interior Sliding Door Latches

Door chain snuggers, center latches and jamb latches keep doors fastened down when not in use



National Manufacturing Co. was started in 1901 as a small wagon company in Sterling, Illinois. The focus soon turned to manufacturing and selling general hardware and over the course of the next century, National Hardware grew to be one of the leaders in builders hardware.

Today, the National Hardware brand has reached global status and offers more than 7,500 SKUs. Our focus is on providing the best hardware and service to our valued customers.



www.natman.com

Contact your local sales representative
or call (800) 346-9445 to speak to a
customer service representative

National Hardware
19701 Da Vinci • Lake Forest, California, 92610



**FARM AND COMMERCIAL
SLIDING DOOR SYSTEMS**
PRODUCT BROCHURE

INNOVATIVE TRACK & HANGER

National Hardware’s Track & Hanger products allow you to customize your sliding door system. The innovative products include:

- TAB-LOC™ all steel sliding door frames
- TrackMaster™ round rail door systems
- Max Easy-Frame® steel verticals and laterals
- Delrin® bearings and wheels

OUR SIMPLE 3 STEP PROCESS ALLOWS YOU TO DECIDE WHICH PRODUCTS ARE RIGHT FOR YOU.

1.CHOOSE A DOOR FRAME AND RAIL TYPE

First, choose the right sliding door frame for your application. Each of the 3 National Hardware door systems provide different benefits in strength, installation, longevity and wind resistance. Then, select a rail type based on the size and weight of your door; heavier doors will need stronger rail.

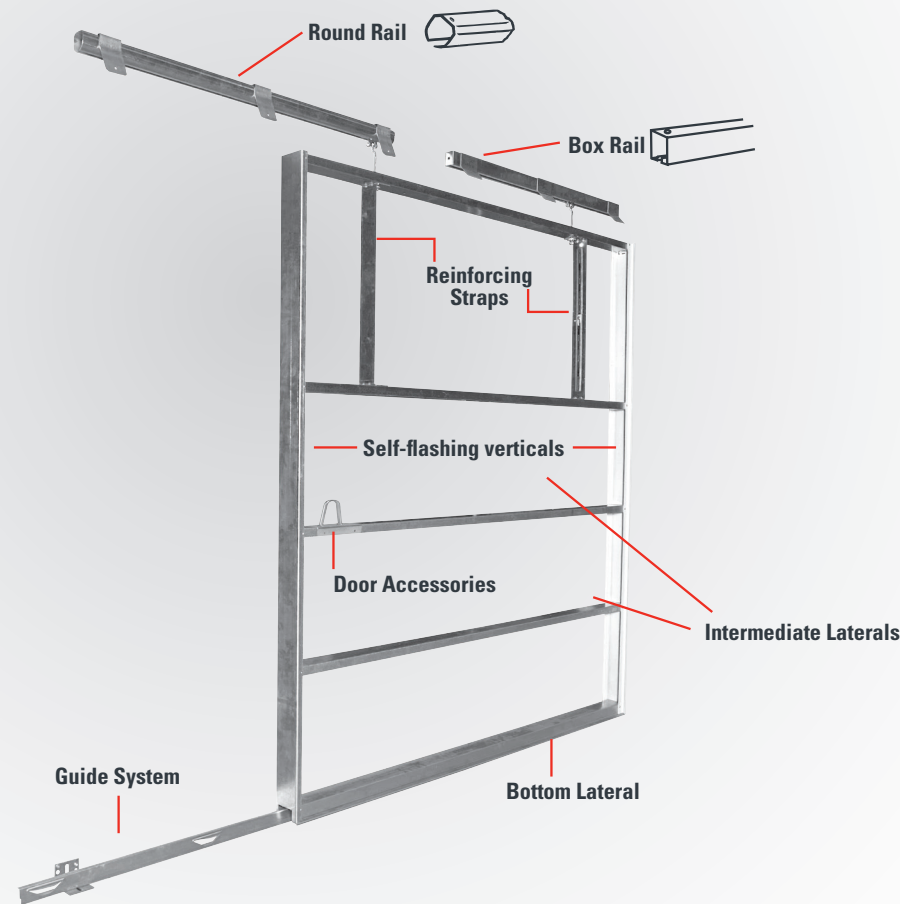
2. SELECT YOUR HANGERS

Based on the size and weight, select the right hangers for your sliding door. Hangers can be selected based on material and installation benefits.

3. ADD THE RIGHT ACCESSORIES

Once you have selected your door frame, hangers and rail, you can add accessories to ensure optimal performance. Accessories reinforce, guide, stop and secure sliding doors so they last for years to come.

SLIDING DOOR PARTS



SLIDING DOOR FRAMES

Easy-Frame®

- For 1 1/2” wood & metal or all metal doors
- 16 gauge steel construction for strong wind resistance
- Pre-punched fastener holes for fast installation
- Self-flashing to accept metal sheets and conceal cut edges
- Verticals are pre-finished white powder coated for clean look
- Accepts wood or steel laterals

TAB-LOC™

- For 2” galvanized steel doors that will not warp, crack, decay or swell
- TAB-LOC™ technology allows fast and easy assembly without fasteners
- 16 gauge steel construction for wind resistance
- Vertical stiffeners available for increased wind resistance
- Self-flashing to accept metal sheets and conceal cut edges
- Verticals available in pre-finished white for a clean look

Max Easy-Frame®

- For 3 1/2” wood & metal or all metal doors
- Verticals are available in 16 gauge steel construction with 16 gauge steel horizontals for maximum wind resistance on large doors
- Self-tapping assembly screws for faster installation
- Integrated steel bottom guide system for better door control
- Reinforcing straps available for better load distribution that eliminates sagging
- Self-flashing to accept metal sheets and conceal cut edges
- Verticals are available with pre-finished durable white powder coat for clean look
- Accepts wood or steel laterals



RAIL & HANGERS

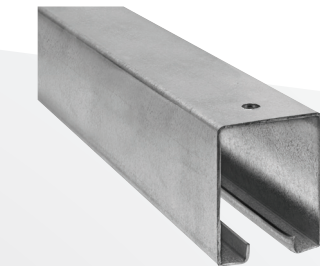
TrackMaster™ Round Rail

- Round rail with flat sides for increased stability for heavy doors
- Rated for up to 600 lbs per hanger pair on single trolley doors
- Round body allows for self-cleaning
- Galvanized steel is wear tested for extreme long life
- Available with welded-on brackets and slide-on brackets for typical mounting configurations



Box Rail

- 16 gauge galvanized steel for dependable performance
- Available in 450 lb and 600 lb door load capacities
- Available with welded-on brackets and slide-on brackets for multiple mounting configurations



TrackMaster™ Round Rail Hangers

- Torture tested to over 225,000 feet of travel while keeping an operating force of less than 5% of the weight of the door
- Available with Delrin® wheels with steel roller bearings for quiet, smooth operation
- Available with hardened steel wheels with steel roller bearings for the ultimate in hanger longevity
- Available in offset and adjustable hangers for wood and steel doors
- Usable on other types of round rail
- Double tandem bracket will double a single hanger door weight capacity from 600 lbs to 1,200 lbs



Box Rail Hangers

- Available with self-lubricating Delrin® bearings for quiet, smooth operation
- Available with hardened steel roller bearings for increased hanger longevity
- Available with multiple configurations for rigid & offset adjustable bolts, as well as door strap options

