

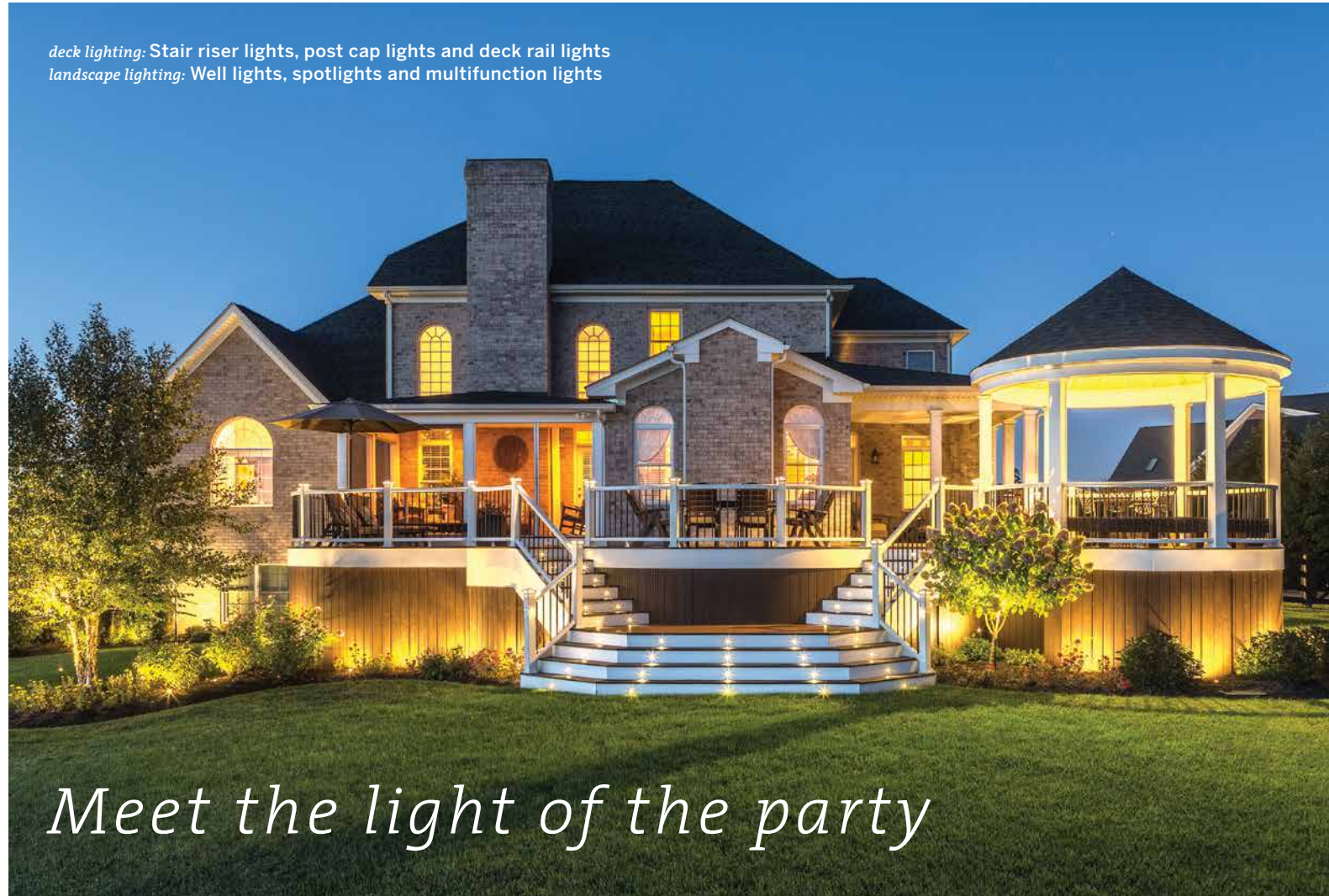


Trex[®]

Trex[®] Outdoor Lighting[™]

UP YOUR OUTDOOR AMBIENCE

deck lighting: Stair riser lights, post cap lights and deck rail lights
landscape lighting: Well lights, spotlights and multifunction lights



Meet the light of the party

With the right light, you can take any outdoor space from invisible to inviting. That's why Trex has expanded our lighting offering to cover the whole landscape—from the deck to the garden to the pathways and beyond.

Trex® OutdoorLighting™ enhances curb appeal with energy-efficient illumination that makes for safer nighttime strolls and impressive deckside ambience. Best of all, the lights install in a snap and disappear into their surroundings for a truly sophisticated look.

ON THE COVER

deck lighting: Stair riser lights, post cap lights and deck rail lights
landscape lighting: Well lights, spotlights and multifunction lights

High performance

- » Energy-efficient Cree® LEDs give off long-lasting illumination*
- » Dimmable glow matches the mood of any outdoor party or dinner
- » Remains weather-proof and salt air resistant in the toughest climates
- » Offers total lighting control via timer and optional dimmer with remote

Perennial beauty

- » Sophisticated fixtures create custom lighting effects and designs
- » Ambient light improves the safety of paths and stairways
- » Out of sight during the day, beautiful light every night
- » Available in a variety of colors to complement any outdoor space

Trex® through and through

- » Part of a complete Trex package
- » Trex LightHub™ connection system makes set-up a snap for DIYers
- » Lighting builds into new decks and landscaping or retrofits into existing spaces
- » Earth-friendly LEDs are up to 9.1 times more efficient than incandescent lighting
- » Protected under warranty for years of outdoor use**

Both deck lighting and landscape lighting are compatible with the Trex LightHub™ connection system—a simple way to set up and control your lights.



A deck in glowing terms

Stair riser lights, post cap lights and recessed deck lights

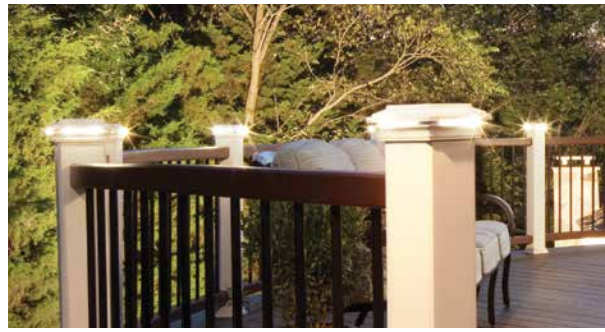


A bright idea for landscapes

Spotlights, well lights, path lights and multifunction lights

*Cree® is a registered trademark of Cree, Inc.

**For the terms of warranties on Trex® OutdoorLighting™, see page 14 or visit trex.com



POST CAP LIGHT

Tucked discreetly under the cap, post cap lights provide a warm downward glow and easy wayfinding.



STAIR RISER LIGHT

Installed into step risers, these lights are durable enough to handle years of passing foot traffic.



DECK RAIL LIGHT

These indirect lights reside directly on the rail post to illuminate the beautiful deck below.



RECESSED DECK LIGHT

These subtle dot lights install flush on the deck boards to efficiently light the way.



WELL LIGHT

Well lights provide ambient illumination for bushes, foliage and small structures. A removable spike keeps the light in place and allows for easy customization.



PATH LIGHT

With safety in mind, path lights brighten walkways with a warm, focused light. Choose from two classic designs to complement existing décor.



MULTIFUNCTION LIGHT

These versatile lights cast a wide glow for highlighting buildings, trees and pathways. Get a custom look for any setting with the 140° swivel head.



SPOTLIGHT

Spotlights use Cree® Super LEDs to shine a beautifully focused light through a modest head. When not in use, they're designed to practically disappear into their surroundings.

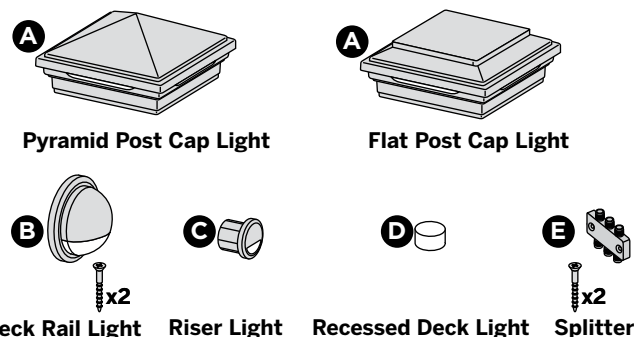
TREX® OUTDOORLIGHTING™

LIGHTING & DESCRIPTION	ITEM NUMBER			
LANDSCAPE LIGHTING				
Rounded Path Light	BKRDPATH2PK, BZRDPATH2PK			
Stepped Path Light	BKSPATH2PK, BZSPATH2PK			
Well Light	BKWELL, BZWELL			
Multifunction Light	BKMULTI, BZMULTI			
Spotlight*	BKSPOT, BZSPOT			
	*Includes: 36v Step-up Transformer & Female to Female Adapter			
	DECK LIGHTING			
	Pyramid or Flat Post Cap Light	<table border="0"> <tr> <td data-bbox="2517 594 2735 786">PYRAMID CAPS BKPYLEDCAP4X4C WTPYLEDCAP4X4C FPPYLEDCAP4X4C THPYLEDCAP4X4C VLPYLEDCAP4X4C GPPYLEDCAP4X4C RSPYLEDCAP4X4C</td> <td data-bbox="2735 594 3061 786">FLAT CAPS BKSQLEDCAP4X4C WTSQLEDCAP4X4C FPSQLEDCAP4X4C THSQLEDCAP4X4C VLSQLEDCAP4X4C GPSQLEDCAP4X4C RSSQLEDCAP4X4C</td> </tr> </table>	PYRAMID CAPS BKPYLEDCAP4X4C WTPYLEDCAP4X4C FPPYLEDCAP4X4C THPYLEDCAP4X4C VLPYLEDCAP4X4C GPPYLEDCAP4X4C RSPYLEDCAP4X4C	FLAT CAPS BKSQLEDCAP4X4C WTSQLEDCAP4X4C FPSQLEDCAP4X4C THSQLEDCAP4X4C VLSQLEDCAP4X4C GPSQLEDCAP4X4C RSSQLEDCAP4X4C
	PYRAMID CAPS BKPYLEDCAP4X4C WTPYLEDCAP4X4C FPPYLEDCAP4X4C THPYLEDCAP4X4C VLPYLEDCAP4X4C GPPYLEDCAP4X4C RSPYLEDCAP4X4C	FLAT CAPS BKSQLEDCAP4X4C WTSQLEDCAP4X4C FPSQLEDCAP4X4C THSQLEDCAP4X4C VLSQLEDCAP4X4C GPSQLEDCAP4X4C RSSQLEDCAP4X4C		
	<ul style="list-style-type: none"> » 4" x 4" LED Post Cap Light [4.55" x 4.55" (114 mm x 114 mm) internal dimensions] » 5'6" Male LightHub™ Lead 			
Deck Rail Light	TEXTURED CHARCOAL BLACK: BKLAMPLEDC TEXTURED BRONZE: BZLAMPLEDC TEXTURED CLASSIC WHITE: WTLAMPLEDC			
<ul style="list-style-type: none"> » LED Deck Rail Light [2.75" (70 mm) OD] » 5'6" Male LightHub Lead 				
LED Riser 4 Pack	TEXTURED CHARCOAL BLACK: BKRISERLED4PKC TEXTURED BRONZE: BZRISERLED4PKC TEXTURED CLASSIC WHITE: WTRISERLED4PKC			
<ul style="list-style-type: none"> » 4 LED Riser Lights [1.25" (32 mm) OD] » 5'6" Male LightHub Lead 				
Recessed Deck Light 4 Pack	RECESSED4PKC			
<ul style="list-style-type: none"> » 4 LED Recessed Lights [1" (25 mm) OD] » 5'6" Male LightHub Lead 				
ACCESSORIES				
Transformer with Timer	5A, 60W: DLTRANSFORMER 2.5A, 30W: 25DLTRANSFORMER			
<ul style="list-style-type: none"> » Output Voltage: 12VDC » Output Power: 60W or 30W » Output Current: 5A or 2.5A » Photo-Activated Timer » 20 ft. LightHub Wire Extension Cable 				
5-Way Transformer Splitter	DL5TFSPPLIT1PK			
Dimmer	DLDIMMER			
» Single Channel with Remote				
1" (25 mm) Forstner Bit — Pack of 6	DLBIT6PK			
LightHub Accessories	DL6SPLIT4PK DL5FTWR4PK DL10FTWR4PK DL20FTWR4PK DL40FTWR2PK DL60FTWR1PK DLFADAP6PK			
<ul style="list-style-type: none"> » 6-Way Splitter » 5 ft. Wire Extension Cable » 10 ft. Wire Extension Cable » 20 ft. Wire Extension Cable » 40 ft. Wire Extension Cable » 60 ft. Wire Extension Cable » Female to Female Adapter 				

TREX® OUTDOORLIGHTING™ INSTALLATION INSTRUCTIONS

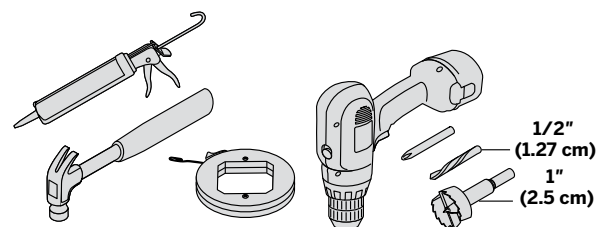
HOW TO INSTALL TREX® DECKLIGHTING™

PARTS

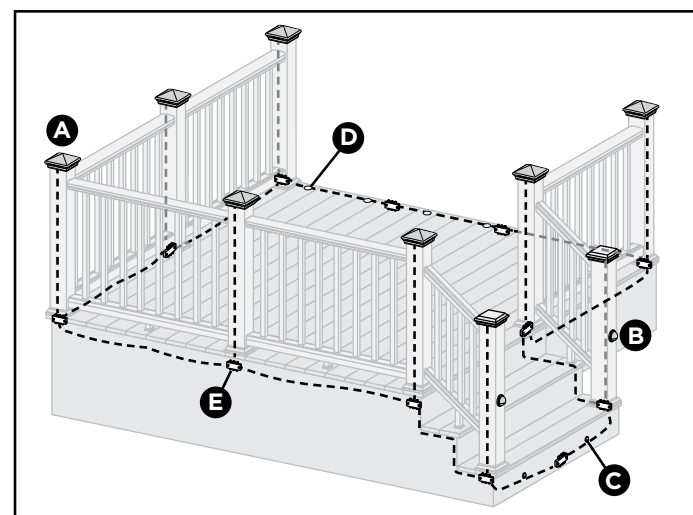


» 5ft, 10ft, 20ft, 40ft, and 60ft connection/extension wires sold separately (these are male to male connection wires).

TOOLS NEEDED



LIGHTING AND WIRING OVERVIEW



NOTE: All wiring and splitters are mounted to inside of framing, picture is just representation of where to place these in general.

NOTE: Avoid railing brackets and locations for deck rail lights when running wires up posts.

NOTE: It is recommended to install wiring and splitters before decking and railing have been installed. **DO NOT** run wires between joists and deck boards.

HAVE QUESTIONS? 1-800-BUY-TREX or trex.com

HELPFUL TIPS

- » Leave slack in wire to make fixture terminations.
- » Recessed lights work well spaced 4' (1.22 m) to 6' (1.83 m) on center around perimeter of deck.
- » Deck rail lights work well at changes in levels of a deck—at the top or the bottom of the stairs, or in conjunction with post cap lights.
- » Riser lights should be placed giving considerations to local codes. If codes do not exist, assess adequate number and placement via darkness evaluation prior to drilling.
- » Drill holes perpendicular to the surface, being careful to hold drill steady, to avoid producing an enlarged hole. If hole is enlarged, light fixture will have a loose fit. Use of a flexible outdoor semi-permanent adhesive (silicone caulk) may be required to anchor light in place.
- » Riser and deck rail holes can be through holes. However, recessed light holes should be drilled to a depth of 3/4" (1.9 cm). Over-drilled recessed light holes will require use of silicone caulk to anchor light in place.
- » Splitters should be used at each post that has lights and depending on spacing in between each riser and recessed light.
- » Cap all unused female connections with caps provided or weather resistant silicone to prevent water damage or corrosion.
- » The splitter is cross linked so there is no specified plug for lights versus lead wires.
- » Leads attached to each light are approx. 5' to 6' (1.5m to 1.8m) in length and have male terminals to plug into splitter.
- » Use a separate dimmer control for each light type for maximum control.
- » It is recommended to have power source attached when installing lights to ensure all components work.

TREX® OUTDOORLIGHTING™ INSTALLATION INSTRUCTIONS

HOW TO INSTALL TREX® DECKLIGHTING™/CONTINUED

General Information

- » **ALWAYS** consult local codes before beginning a project.
- » **USE TREX TRANSFORMER ONLY.** Use of any other transformer voids warranty.

TRANSFORMER CAPACITY BY TYPE

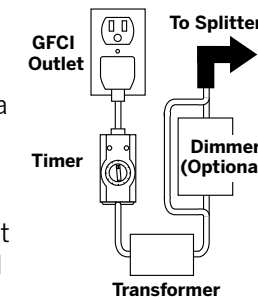
Type of Light	5A Transformer (DL TRANSFORMER)	2.5A Transformer (2.5 DL TRANSFORMER)
Riser	180	90
Recessed	180	90
Post Cap	55	22
Deck Rail	180	90

Above listing is for maximum number of each individual types of lights. If mixing and matching lighting, contact Trex to determine if more than one transformer is required.

Planning

NOTE: When designing your deck, plan locations of lights, power supply, timer, and dimmer. These should be accessible for service. Installing a GFCI outlet is **REQUIRED** to help prevent damage to lighting from electrical surges.

1. The dimmer remote will work in a 30' (9 m) radius of the unit.
2. Dimmer should be installed in a dry location.
3. Timer must be installed vertically with receptacle facing downwards. Timer must be at least 1' from ground level when installed as per federal safety code height regulations. Timer must be in view of the sun to use the dusk/dawn feature.

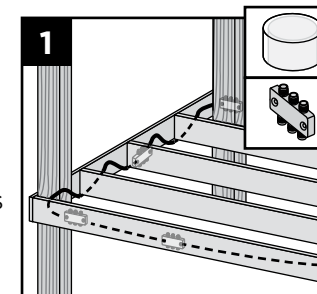


Installing Wiring

NOTE: It is recommended to install wiring and splitters before decking and railing have been installed.

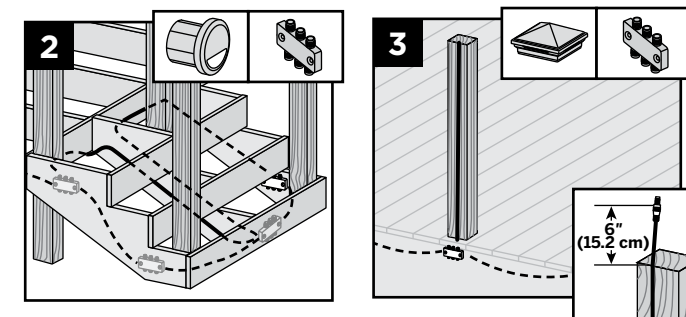
- » Use Male to Male connection wire (lengths vary) that will connect to each required splitter.

1. Wiring must be run under decking structure and behind stringers. **DO NOT** run wires between deck boards and joists. Staple to frame with cable staples at least 1/4" (0.6 cm) wide. **DO NOT** crush wire insulation with staple.



HAVE QUESTIONS? 1-800-BUY-TREX or trex.com

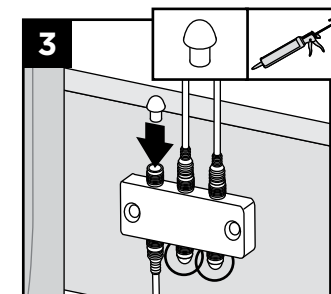
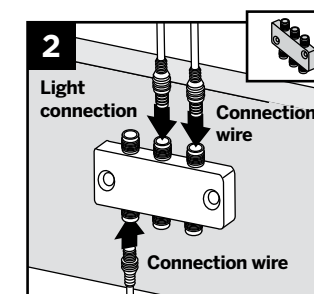
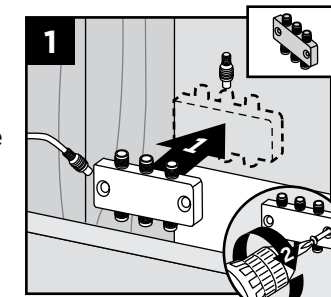
Construction methods are always improving. Please ensure you have the most up-to-date installation instructions by visiting trex.com



2. Wiring can be run under deck and behind risers. Staple to frame with cable staples at least 1/4" (0.6 cm) wide. **DO NOT** crush wire insulation with staple.
3. Remove 5' lead wire that is connected to post cap and attach wire to post with male connection at top of post (female connection would be at bottom of post and connect into splitter). Avoid running wire on side of post where railing brackets or deck rail lights will be installed. Leave approximately 6" (15.2 cm) of lead at top to make connections. Staple to frame and posts with cable staples at least 1/4" (0.6 cm) wide. **DO NOT** crush wire insulation with staple.

Making Connections

1. Install splitters to inside of framing using hardware provided. Install at every post base where lighting is present and depending on spacing in between each riser and recessed light.



2. Attach male lead from lights to female connections on splitter. Also attach male to male connection wires in between each splitter. Continue until all wiring from lights are attached to splitters and connector wires are attached in between splitters.
3. Cap off all unused female connections on splitters using caps provided or weather resistant silicone.

TREX® OUTDOORLIGHTING™ INSTALLATION INSTRUCTIONS

HOW TO INSTALL TREX® DECKLIGHTING™/CONTINUED

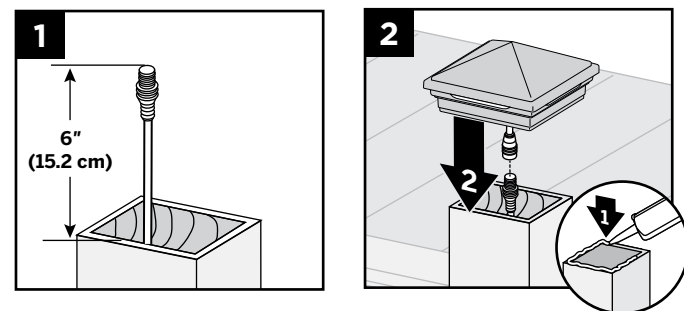
Timer Operation Instructions

- Select the mode of operation:
 - » Dusk to Dawn
 - » 1 - 8 hours
 - » Always "ON"
 - » "OFF"

Program repeats daily. When power is flowing to lights, green light above POWER is on.

Installing Post Cap Lights

NOTE: Install post cap lights after the railing system, post sleeve skirt, and post sleeve have been installed.



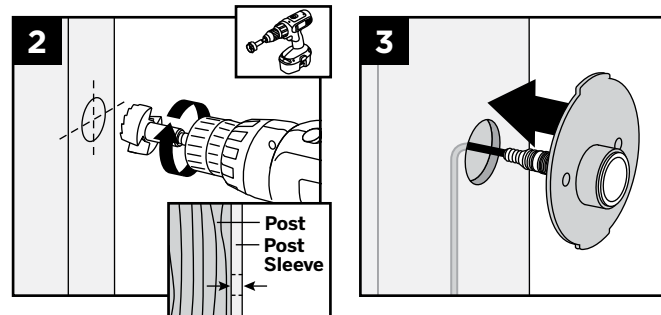
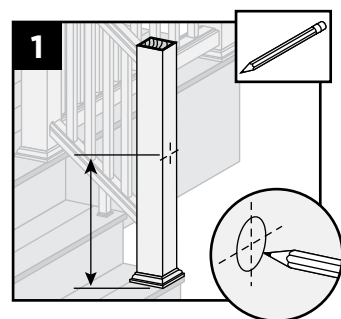
- Connect male lead from wiring to female connector from cap. Also attach male to male connection wires in between each splitter. Continue until all wiring from lights are attached to splitters as well as connector wires are attached in between splitters. (See Making Connections section for details.)
- After verifying wiring is correct by turning lights on, attach cap to top of post with silicone caulk.

Installing Deck Rail Lights

NOTE: Instructions shown below are for new deck installation and are shown **BEFORE** railing system has been installed.

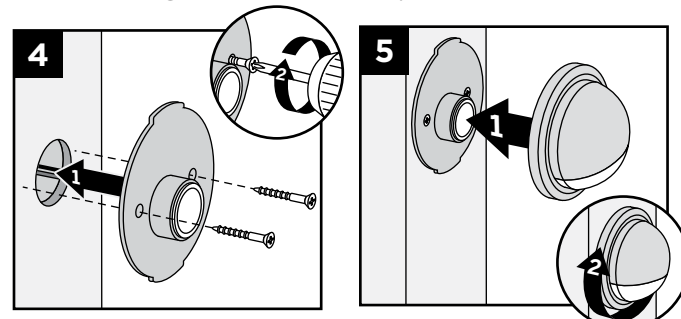
- Place post sleeve over pressure treated post and mark desired height, centered on post sleeve for deck rail light location.

NOTE: If deck boards are not installed yet place an appropriate deck width spacer board to ensure post sleeve is at correct height.



- Drill a 1" (2.5 cm) hole through post sleeve. Use care to stop drill before cutting into post.
- Remove the post sleeve from the post and fish wire from deck rail light through hole and down to female connector on splitter. Also attach male to male connection wires in between each splitter. Continue until all wiring from lights are attached to splitters as well as connector wires are attached in between splitters. (See Making Connections section for details.)

IMPORTANT NOTE: Before attaching deck rail light to the post/post sleeve make sure decking has been installed along with skirt over the post sleeve.



- Replace post sleeve over pressure treated post and align holes for screws vertically and attach fixture base to post with provided screws as indicated above.
- Line up polycarbonate lens with fixture housing. Twist onto fixture base.

NOTE: If railing has already been installed, lead wires will need to be fished through the post sleeve to reach the desired location for the deck rail light. In some cases if the provided lead wire does not fit (due to connector size), the wire connectors can be cut off wire nuts can be used. Test lights with the power on and if lights do not function that are wired with this method, switch the connector wires.

HAVE QUESTIONS? 1-800-BUY-TREX or trex.com

Construction methods are always improving. Please ensure you have the most up-to-date installation instructions by visiting trex.com

TREX® OUTDOORLIGHTING™ INSTALLATION INSTRUCTIONS

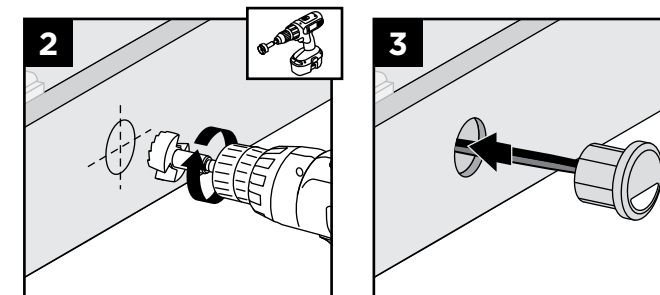
HOW TO INSTALL TREX® DECKLIGHTING™/CONTINUED

Installing Riser Lights

NOTE: Install riser lights after stair and risers have been installed.

- Mark locations for each light, generally 4" (10.2 cm) above tread. Consult local codes for lighting requirements.

NOTE: If possible, avoid locations over stringers as holes will be more difficult to create.



- Drill a 1" (2.5 cm) diameter hole at least 1" (2.5 cm) deep into riser. If riser material is thicker than 1" (2.5 cm), use a 1/2" (1.27 cm) drill bit to create a passage for wires.
- Thread wires through hole.

- Press light into hole, ensuring lens is horizontal. Make connections behind stairs from male lead wire from recessed light into female connection on splitter. Also attach male to male connection wires in between each splitter. Continue until all wiring from lights are attached to splitters and connector wires are attached in between splitters. (See Making Connections section for details.)

NOTE: DO NOT install Riser Light or Deck Rail Light into top or bottom rails or balusters.

HAVE QUESTIONS? 1-800-BUY-TREX or trex.com

Construction methods are always improving. Please ensure you have the most up-to-date installation instructions by visiting trex.com

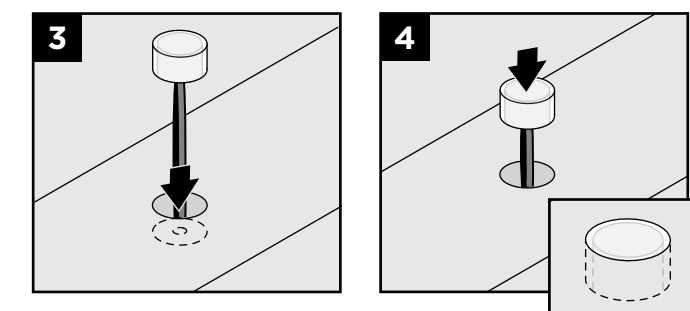
Installing Recessed Deck Lights

NOTE: Install recessed deck lights after installing decking.

- Mark locations for lights in deck boards.

NOTE: If possible, avoid locations over joists as holes will be more difficult to create.

- Drill a 1" (2.5 cm) diameter hole 3/4" (1.9 cm) deep into deck board. Hole cannot go all the way through deckboard or light will fall through. Make sure drill bit is perpendicular to board. Drill a 1/2" (1.27 cm) diameter hole in base of the first hole through deck board.



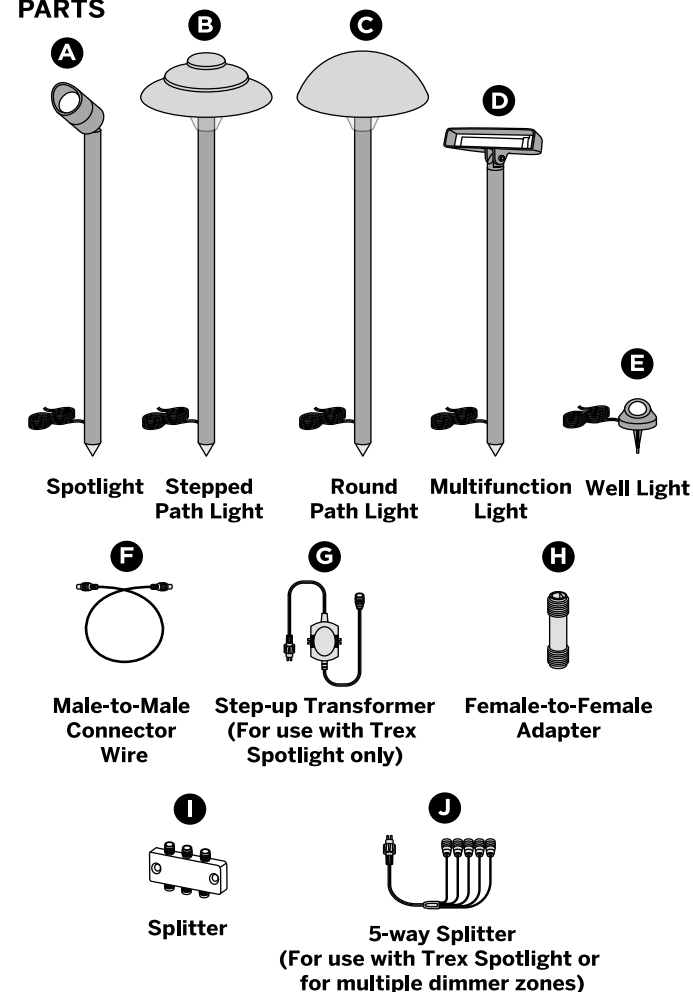
- Thread wires through hole. **DO NOT pull LED into hole by pulling on wires. This may damage wires or LED.**
- Press light into hole until flush with surface. Make connections under deck from male lead wire from riser light into female connection on splitter. Also attach male to male connection wires in between each splitter. Continue until all wiring from lights are attached to splitters and connector wires are attached in between splitters. (See Making Connections section for details.)

TREX® OUTDOORLIGHTING™ INSTALLATION INSTRUCTIONS

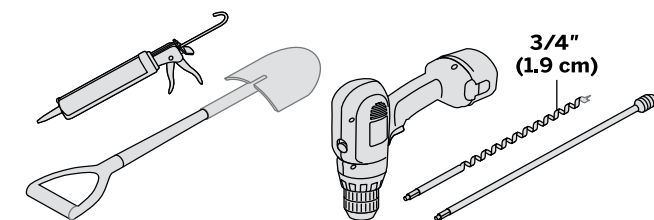
Before installing any Trex product, you should review local building codes and regulations, and consult with local building officials, to ensure compliance and safety.

HOW TO INSTALL TREX® LANDSCAPE LIGHTING™

PARTS



TOOLS NEEDED



WARNING:
BEFORE ANY TREX LANDSCAPE LIGHTING IS INSTALLED, IT IS THE INSTALLERS RESPONSIBILITY TO ENSURE THAT ALL UNDERGROUND UTILITIES/LINES ARE LOCATED (GAS LINES, ELECTRICAL LINES, DATA LINES, WATER LINES, ETC.) PRIOR TO ANY WORK BEING DONE.

HAVE QUESTIONS? 1-800-BUY-TREX or trex.com

HELPFUL TIPS

- » Location of Trex Landscape lighting is up to customer as to where they would like lighting components placed. Different length of lead wires can be purchased depending on the distances between lights.
- » Leave slack in wire to make fixture terminations. Keep in mind slack will also be required to properly bury wire.
- » Trex Landscape wires are approved for underground use. Wire is made from silver coated copper.
- » All landscape lights EXCEPT for Trex Spotlight have female connectors.
- » Trex Spotlight will require the use of a female-to-female adaptor to connect light to male connector wire (this adaptor is sold with Trex Spotlight but is also sold separately if needed for other areas).
- » All Trex Landscape lights use male-to-male connector wires, sold in lengths of 5', 10', 20', 40', and 60' (sold separately).
- » All lights EXCEPT the spotlight can be wired together on a circuit. Optional 6-way splitters are available (sold separately) to make installation easier.
- » Trex Spotlights require different wiring configurations; refer to detailed instructions on following pages for specifics.
- » Only use a standard household AC GFCI protected outlet to help prevent damage from power surges or lightning.
- » When using timer, ensure this is in full view of the sun if using the dusk/dawn feature.
- » It is recommended to have power source attached when installing lights to ensure all components work.
- » When burying wire in live sod use spade shovel to make a slit in the soil. Bury the wire 1"-3" (2.5 cm - 7.6 cm) deep and tamp down the soil. Water heavily to allow the soil to resettle and minimize impact on the installation site.

TREX® OUTDOORLIGHTING™ INSTALLATION INSTRUCTIONS

HOW TO INSTALL TREX® LANDSCAPE LIGHTING™ (TREX WELL LIGHT, PATH LIGHTS, MULTIFUNCTION LIGHT)

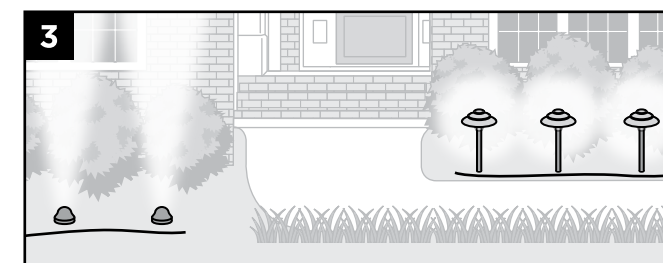
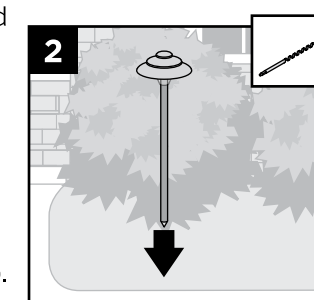
TRANSFORMER CAPACITY BY TYPE

Type of Light	5A Transformer (DL TRANSFORMER)	2.5A Transformer (2.5 DL TRANSFORMER)
Well Light	46	23
Path Light	31	16
Multifunction Light	31	16

Above listing is for maximum number of each individual types of lights. If mixing and matching lighting, contact Trex to determine if more than one transformer is required.



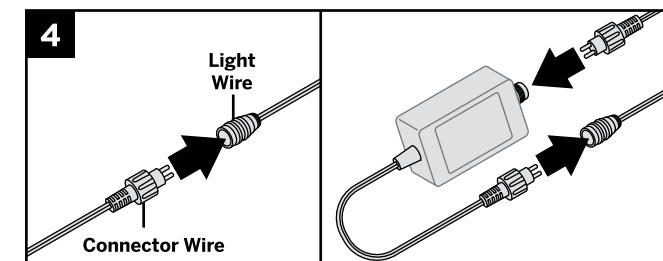
1. Locate placement of lights and lead wiring. Plan accordingly if you choose to bury wire under concrete or other permanent structures.
2. Place all lights in desired location. If necessary use 3/4" (1.9 cm) auger with optional extension in a drill to penetrate the surface enough to ensure the fixture is firmly implanted (SEE WARNING ON PAGE 1).



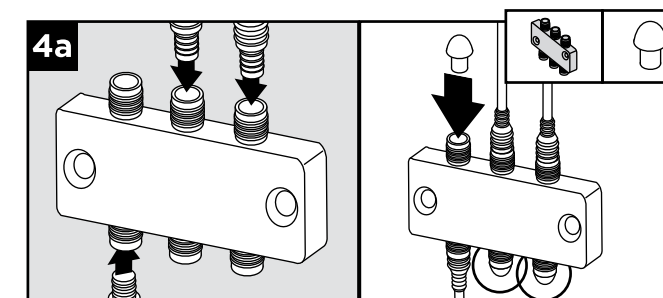
3. Run all wires from the power source locations to the lights on top of the soil, being mindful to leave slack. Pay special attention if using separate circuits with independent dimmers (grouping lights by type is recommended).

HAVE QUESTIONS? 1-800-BUY-TREX or trex.com

Construction methods are always improving. Please ensure you have the most up-to-date installation instructions by visiting trex.com



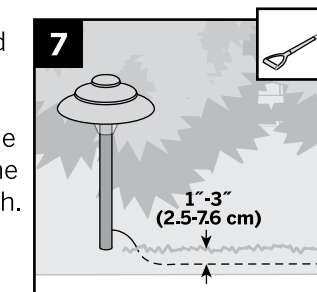
4. Connect all lights. Wire the optional dimmer (recommended) between the main 20' (6.1 m) transformer to male lead and the transformer for each circuit. Ensure connections (including splitters), fixtures, and power sources all work properly.



- 4a. Use male-to-male extension cables to make connections to splitters (all sold separately). Cap off all unused female connections on splitters using caps provided or weather resistant silicone.
5. You can mix and combine all lights except the spotlight on the same circuit but make sure you **DO NOT** exceed the maximum number of lights per transformer. If running separate circuits with dimmers on each circuit, using a separate transformer for each circuit can simplify installation. However, use of a 5-way splitter will allow for separate circuits on the same transformer.

6. It is recommended the installer preview light placement in the dark to ensure desired effect is achieved.

7. Once the light, wire, and splitter placement is finalized, work from the light fixtures towards the power source to bury the wire to the desired depth. No more than 1"-3" (2.5 cm - 7.6 cm) is required.



TREX® OUTDOORLIGHTING™ INSTALLATION INSTRUCTIONS

HOW TO INSTALL TREX LANDSCAPE LIGHTING (TREX SPOTLIGHT)

TRANSFORMER CAPACITY BY TYPE	
Type of Light	5A Transformer (DL TRANSFORMER)
Spotlight	7

Above listing is for maximum number of each individual types of lights. If mixing and matching lighting, contact Trex to determine if more than one transformer is required.

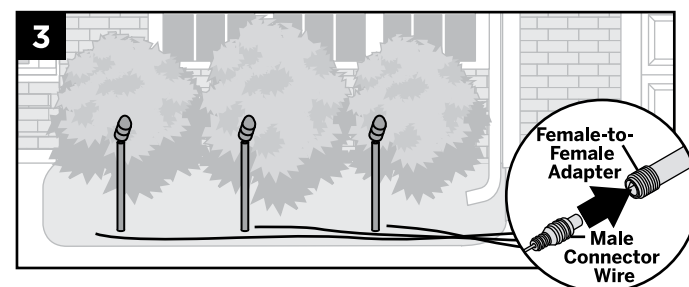
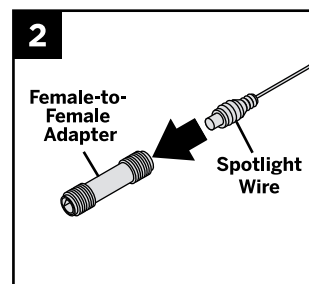
NOTES:

- » Each Trex Spotlight requires use of a dedicated 36V Step-up Transformer (included with each Trex Spotlight). **WARNING:** Step-up Transformer **DOES NOT** have fault protection, thus care must be taken if testing.
- » Spotlights must use a dedicated line running directly from the included 36V step-up transformer. **Maximum** of seven spotlights are allowed per one 5-amp transformer. (**NOTE:** Must use two 5-way splitters if installing six or seven spotlights to single 5A transformer as 5-way splitter is designed for up to five spotlights.) Spotlights have a male lead and require the use of a female-to-female adaptor to connect spotlight to connector wire. The spotlight fixture has a male lead. Install the extension cable accordingly. **DO NOT mix** any other lights on the spotlight circuit. Applying 36V to any other fixture types will result in very short diode life and will void warranty.
- » **DO NOT LOOK DIRECTLY INTO SPOTLIGHT WHEN ON, THIS LIGHT IS VERY STRONG.**

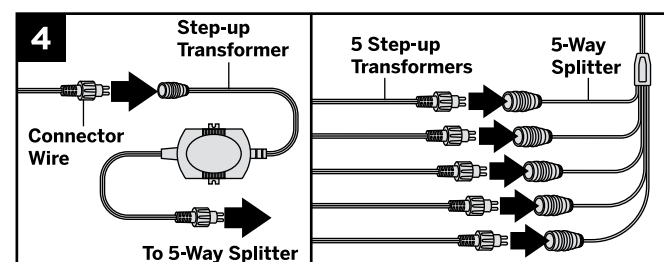


1. Locate placement of spotlights and lead wiring. Plan accordingly if you choose to bury wire under concrete or other permanent structures.

2. Connect male lead from light to female to one end of female adaptor.



3. Connect opposite end of female adaptor to male connector wire. Choose appropriate length wire based on your needs. Run all wire on the surface back to the location of the power supply.



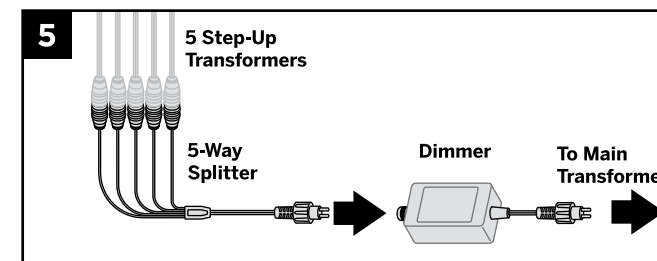
4. Connect opposite end of male connector wire cable to female end on Step-up Transformer. If using more than one spotlight, use 5-way splitter on Step-up Transformer, making sure that each spotlight is utilizing its own 36V Step-up Transformer. Wire the Step-up Transformer or 5-way splitter to the 5A main transformer.

HAVE QUESTIONS? 1-800-BUY-TREX or trex.com

Construction methods are always improving. Please ensure you have the most up-to-date installation instructions by visiting trex.com

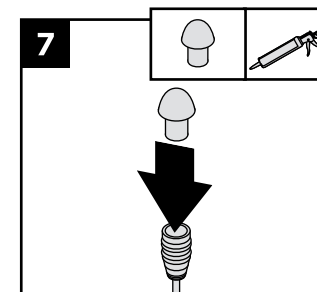
TREX® OUTDOORLIGHTING™ INSTALLATION INSTRUCTIONS

HOW TO INSTALL TREX® LANDSCAPE LIGHTING™/CONTINUED (TREX SPOTLIGHT)

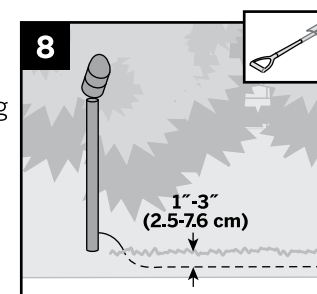


5. If using an optional dimmer (recommended), simply place the dimmer between the 5-way splitter and main transformer.
6. Test lights to ensure power supply, connections, and light fixtures all work properly and placement is appropriate.

7. Ensure that all unused connections on 5-way splitter are covered using weather resistant silicone.



8. Ensure that lights are all working with all wiring attached prior to burying any wire. No more than 1"-3" (2.5 cm - 7.6 cm) is required.



HAVE QUESTIONS? 1-800-BUY-TREX or trex.com

Construction methods are always improving. Please ensure you have the most up-to-date installation instructions by visiting trex.com

TREX® LIMITED WARRANTY

Trex Company, Inc. (hereinafter “Trex”) warrants to the original purchaser (“Purchaser”) that, for the period of time set forth in the following sentence, under normal use and service conditions, Trex® products shall be free from material defects in workmanship and materials, and shall not split, splinter, rot or suffer structural damage from termites or fungal decay. The term of such warranty shall be twenty-five (25) years from the date of original purchase for a residential application, and ten (10) years from the date of original purchase for a commercial application. If a defect occurs within the warranty period, Purchaser shall notify Trex in writing and, upon confirmation by an authorized Trex representative of the defect, Trex’s sole responsibility shall be, at its option, to either replace the defective item or refund the portion of the purchase price paid by Purchaser for such defective item (not including the cost of its initial installation).

Notwithstanding the foregoing, (a), the term of the warranty for the LED lights and housing for Trex® DeckLighting™ shall be seven (7) years, the term of the warranty for the LED lights and housing for Trex® LandscapeLighting™ shall be five (5) years, and the term of the warranty for the dimmer, timer and transformer for both shall be three (3) years, in each case provided that a Trex transformer is used (with no warranty on any components if a Trex transformer is not used), and any other parts or accessories shall not be warranted; (b) with respect to hardware for the Trex Surroundings® gate (gate frame, hinges and screws), the term of the warranty shall be five (5) years, (c) with respect to Trex Decorative Balusters, the term of the warranty covering the paint coating shall be ten (10) years, and shall be prorated in the following manner: 100% replacement for the first five (5) years; and 50% replacement for the next five (5) years, and (d) this warranty shall not apply to Trex Elevations® steel deck framing, Trex Reveal® aluminum railing and TrexTrim™ (which each have separate warranties).

For purposes of this warranty, a “residential application” shall refer to an installation of the Product on an individual residence, and a “commercial application” shall refer to any installation of the Product other than on an individual residence.

THIS WARRANTY SHALL NOT COVER AND TREX SHALL NOT BE RESPONSIBLE FOR COSTS AND EXPENSES INCURRED WITH RESPECT TO THE REMOVAL OF DEFECTIVE TREX PRODUCTS OR THE INSTALLATION OF REPLACEMENT MATERIALS, INCLUDING BUT NOT LIMITED TO LABOR AND FREIGHT.

With respect to a residential application, this warranty may be transferred one (1) time, within the five (5) year period beginning from the date of original purchase by the Purchaser, to a subsequent buyer of the property upon which the Trex products were originally installed. With respect to a commercial application, this warranty is freely transferable to subsequent buyers of the property upon which the Trex products were originally installed.

To make a claim under this limited warranty, Purchaser, or the transferee, shall send to Trex, within the warranty period referred to above, a description of the claimed defect and proof of purchase, to the following address:

Trex Company, Inc.
Customer Relations
160 Exeter Drive
Winchester, VA 22603-8605

Trex does not warrant against and is not responsible for, and no implied warranty shall be deemed to cover, any condition attributable to: (1) improper installation of Trex products and/or failure to abide by Trex’s installation guidelines, including but not limited to improper gapping; (2) use of Trex products beyond normal use and service conditions, or in an application not recommended by Trex’s guidelines and local building codes; (3) movement, distortion, collapse or settling of the ground or the supporting structure on which Trex products are installed; (4) any act of God (such as flooding, hurricane, earthquake, lightning, etc.), environmental condition (such as air pollution, mold, mildew, etc.), staining from foreign substances (such as dirt, grease, oil, etc.), or normal weathering (defined as exposure to sunlight, weather and atmosphere which will cause any colored surface to gradually fade, chalk, or accumulate dirt or stains); (5) variations or changes in color of Trex products; (6) improper handling, storage, abuse or neglect of Trex products by Purchaser, the transferee or third parties; or (7) ordinary wear and tear.

No person or entity is authorized by Trex to make and Trex shall not be bound by any statement or representation as to the quality or performance of Trex products other than as contained in this warranty. This warranty may not be altered or amended except in a written instrument signed by Trex and Purchaser.

UNDER NO CIRCUMSTANCES WILL TREX BE LIABLE FOR SPECIAL, INCIDENTAL OR CONSEQUENTIAL DAMAGES, WHETHER SUCH DAMAGES ARE SOUGHT IN CONTRACT, IN TORT (INCLUDING BUT NOT LIMITED TO NEGLIGENCE AND STRICT LIABILITY) OR OTHERWISE, AND TREX’S LIABILITY WITH RESPECT TO DEFECTIVE PRODUCTS SHALL IN NO EVENT EXCEED THE REPLACEMENT OF SUCH PRODUCTS OR REFUND OF THE PURCHASE PRICE, AS DESCRIBED ABOVE.

Some States or Provinces do not allow the exclusion or limitation of incidental or consequential damages, so the above limitation or exclusion may not apply to you. This warranty gives you specific legal rights, and you may also have other rights that vary from State to State or Province to Province.

Copyright © 2014 Trex Company, Inc.

TREX® OUTDOORLIGHTING™ COLOR & FINISH OPTIONS

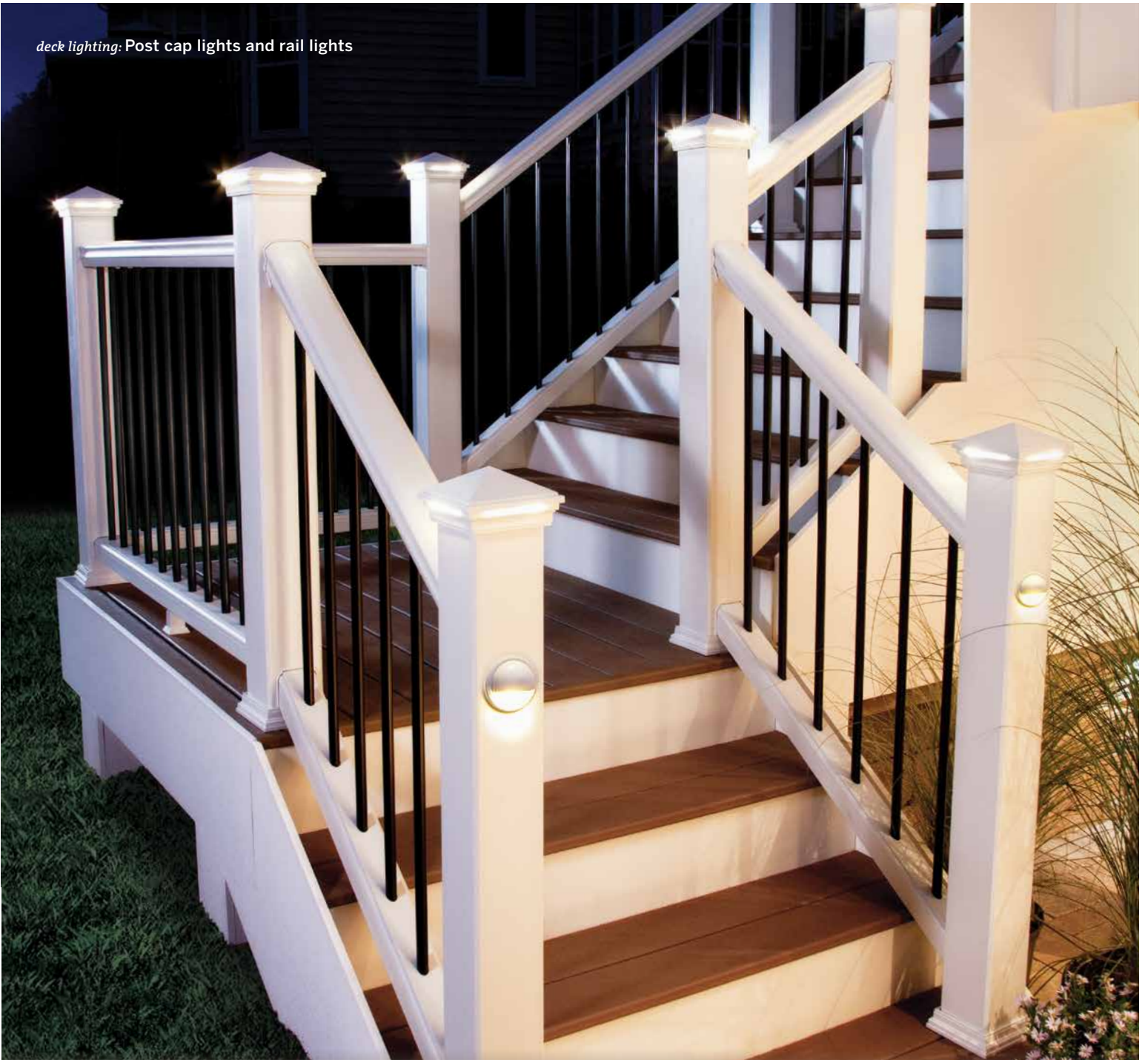
DECK LIGHTING

RISER LIGHTS & DECK RAIL LIGHTS—TEXTURED FINISH	POST CAP LIGHTS—SMOOTH FINISH
CHARCOAL BLACK	CHARCOAL BLACK
	CLASSIC WHITE
	FIRE PIT
BRONZE	GRAVEL PATH
	ROPE SWING
CLASSIC WHITE	TREE HOUSE
	VINTAGE LANTERN

LANDSCAPE LIGHTING

PATH LIGHTS, WELL LIGHTS, SPOTLIGHTS & MULTIFUNCTION LIGHTS—TEXTURED FINISH	
CHARCOAL BLACK	BRONZE

deck lighting. Post cap lights and rail lights



FRAMING | DECKING | RAILING | PORCH | FASCIA | TRIM | LIGHTING | DRAINAGE | FURNITURE | PERGOLA

FIND US ON



Trex®

OUTDOOR LIVING. ELEVATED.

Visit trex.com or call 1-800-BUY-TREX



© 2014 Trex Company, Inc. All rights reserved. Trex®, the Trex logo, Trex Transcend®, Trex® OutdoorLighting™, Trex® LandscapeLighting™, Trex® DeckLighting™ and Trex® Lighthouse™ are either federally registered trademarks, trademarks or trade dress of Trex Company, Inc., Winchester, Virginia.